



**BRIDGE
STREET
STUDIOS**

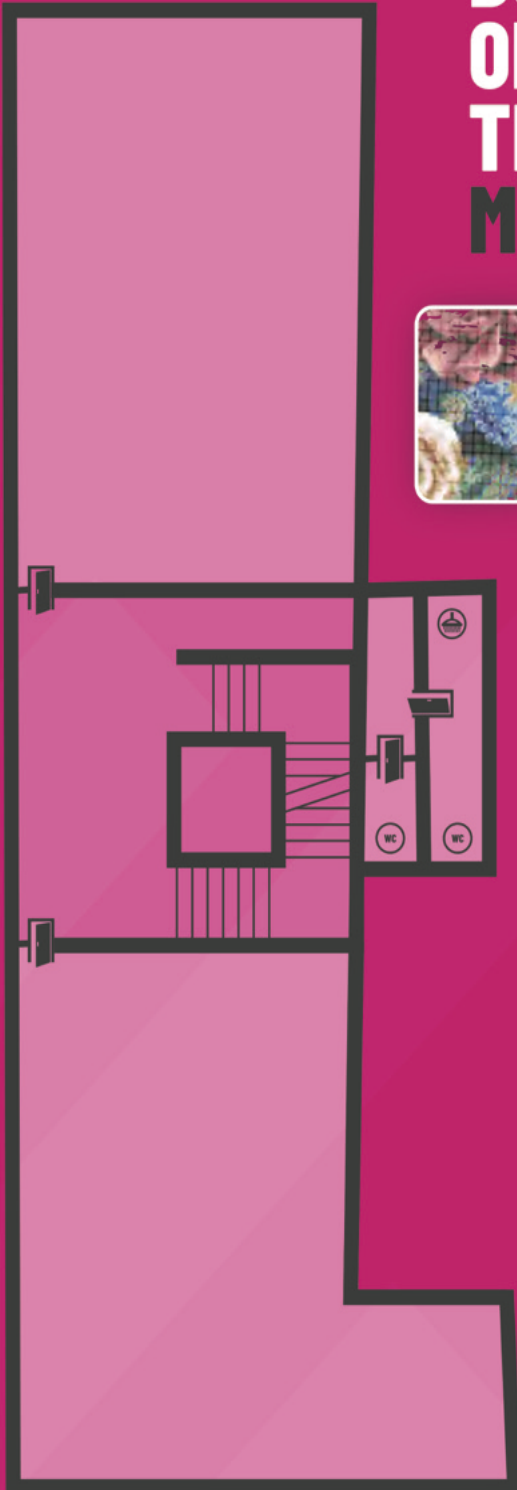
WE
ARE
NOW
OPEN

BRIDGE STREET

BOUTIQUE OFFICE SPACE IN THE HEART OF MANCHESTER.



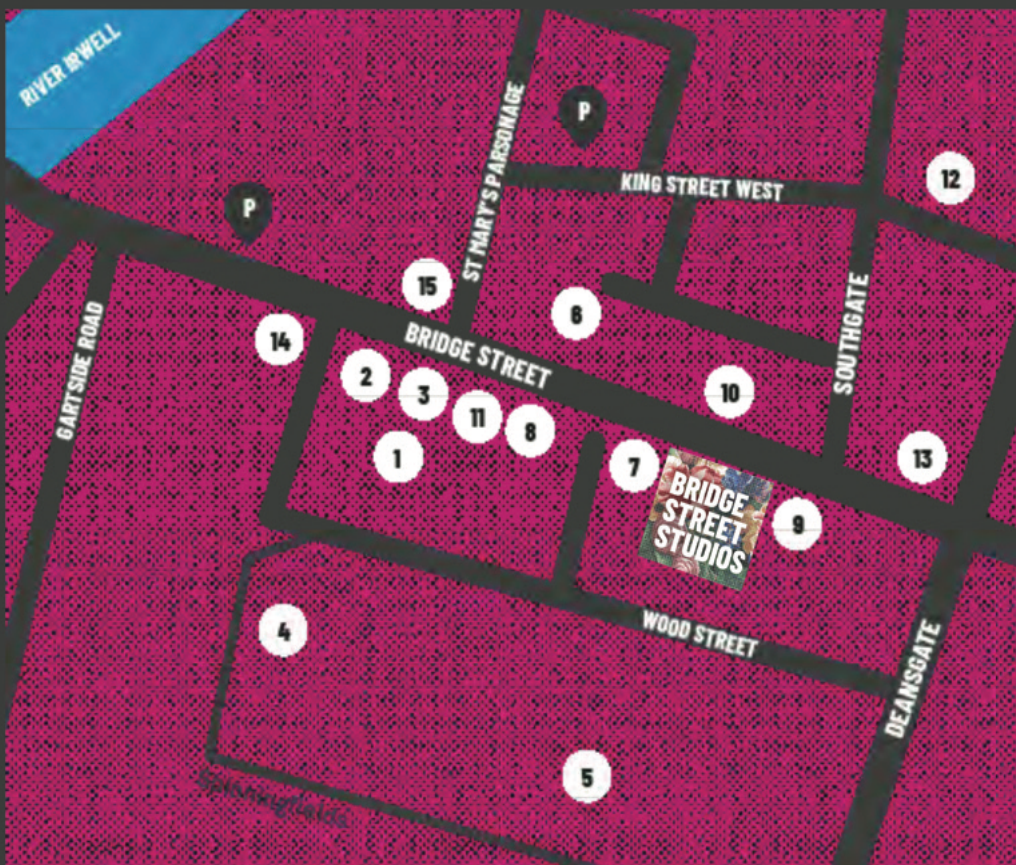
**ONE SPACE
AVAILABLE**



**1,080 sq ft of space
across a full floor
or half a floor of
525 sq ft suitable
for 4-18 person
businesses.**

- Private Offices
- Super fast wifi
- High tech access
- Flexible terms
- Showers
- Option for fully fitted out space
- Fully integrated private kitchen
- Communal meeting spaces
- 5 minute walk from Salford Central Train Station and 10 minutes from Deansgate Train Station
- 8 minute walk from St Peter's Square Metrolink

WE'VE GOT SOME FRIENDLY NEIGHBOURS.



- 1 Manchester House
- 2 Neighbourhood
- 3 Artisan
- 4 Oast House
- 5 Australasia

- 6 Crazy Pedros
- 7 The Bridge Pub
- 8 The Masons
- 9 Randall and Aubin
- 10 Café Istanbul

- 11 Dishoom
- 12 House of Fraser
- 13 Sainsbury's
- 14 Waitrose
- 15 Costa

We'd Love to talk to you about it.

 0161 711 0851

 hello@watchthisspace.property









**BRIDGE
STREET
STUDIOS**

62 Bridge Street, Manchester, M3 3BW



hello@watchthisspace.property

www.watchthisspace.property

01617110851